

NI HERI KUNINGIA NYUMBANI

Mus. Je T'Aime

sol

si6 la 4/3

R/ Ni He - ri ku - i - ngi - a Nyu -

Detailed description: This system contains the first two lines of music. The top staff is in treble clef with a key signature of one sharp (F#) and a 2/4 time signature. The bottom staff is in bass clef with the same key signature and time signature. The lyrics 'Ni He - ri ku - i - ngi - a Nyu -' are written below the notes. Above the first measure, the note 'sol' is written. Above the second measure, the notes 'si6' and 'la 4/3' are written. The music consists of a melody in the treble clef and a bass line in the bass clef.

Sol Re do re6 /5

mba - ni mwa - ko, Ni he - ri kus -

Detailed description: This system contains the third and fourth lines of music. The top staff is in treble clef with a key signature of one sharp (F#) and a 2/4 time signature. The bottom staff is in bass clef with the same key signature and time signature. The lyrics 'mba - ni mwa - ko, Ni he - ri kus -' are written below the notes. Above the first measure, the note 'Sol' is written. Above the second measure, the note 'Re' is written. Above the third measure, the notes 'do' and 're6 /5' are written. The music consists of a melody in the treble clef and a bass line in the bass clef.

Re 7 sol sol

ta - re - he. Ni he. 1-5. Nyu -

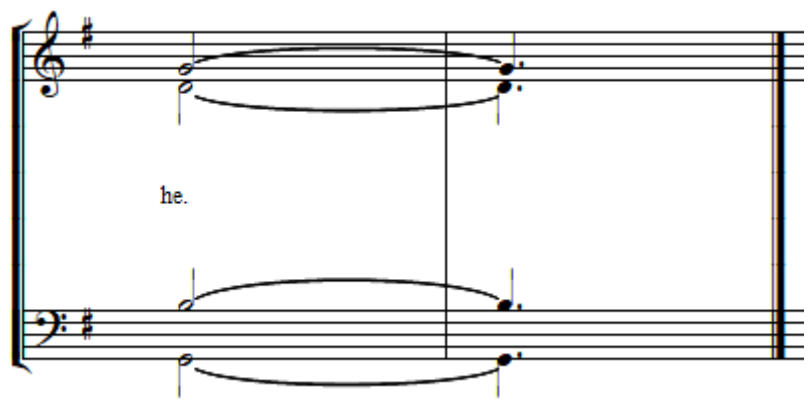
Detailed description: This system contains the fifth and sixth lines of music. The top staff is in treble clef with a key signature of one sharp (F#) and a 2/4 time signature. The bottom staff is in bass clef with the same key signature and time signature. The lyrics 'ta - re - he. Ni he. 1-5. Nyu -' are written below the notes. Above the first measure, the notes 'Re' and '7' are written. Above the second measure, the note 'sol' is written. Above the third measure, the note 'sol' is written. The music consists of a melody in the treble clef and a bass line in the bass clef.



mba - ni mwa - ko m - na 1. Fu - ra -
 2. Ma - pe
 3. A - ma -
 4. Re - he -
 5. U - mo -



1. ha
 2. ndo
 3. ni 1-5. Ni He -- ri tus - ta - re -
 4. ma
 5. ja



he.